



› Case study

A lightweight
solution for
clean energy
production.



COMPANY

Urban Energy

DATE

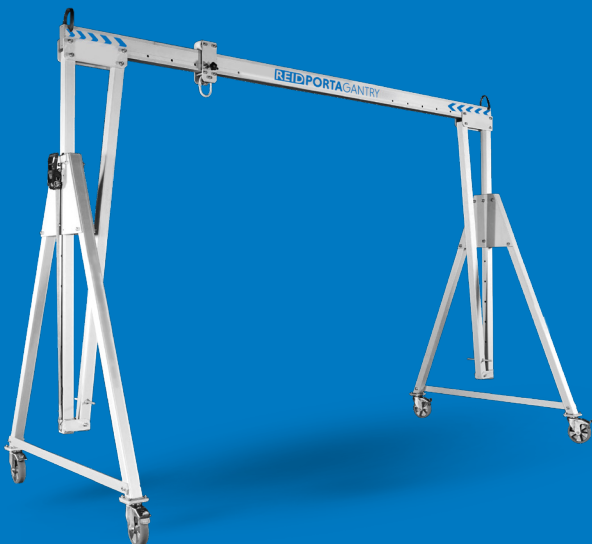
2021

LOCATION

New York, USA

PRODUCT

PORTAGANTRY



FAD Equipment Store supplied two REID **PORTAGANTRY** systems with wind-up jack legs to help Urban Energy in creating a cleaner future by supporting in the installation of solar panels on existing buildings across New York City.

The background

Urban Energy is dedicated to accelerating clean distributed energy throughout urban buildings in New York City. They design, install, and operate solar panels on older buildings in more urban and congested areas. Urban Energy's canopy racking system for the solar panels is the first of its kind and has been engineered specifically for the roofs of older, multi-family buildings.

The challenge

Urban Energy required a lifting solution capable of lifting two I-beams weighing 2700lb whilst being welded together to create a part of the canopy racking system which is used to support the solar panels. The I-beams needed to be lifted and held into place simultaneously between the height of 9ft and 12ft.

Due to the congested environment the use of cranes can be costly and challenging, due to the height required and access on the city streets.



The solar panels are installed onto older infrastructures, meaning that Urban Energy were conscious of using large, heavy lifting equipment onto the roofs and therefore required a lightweight system, like the ones that REID Lifting Inc could offer.

The solution

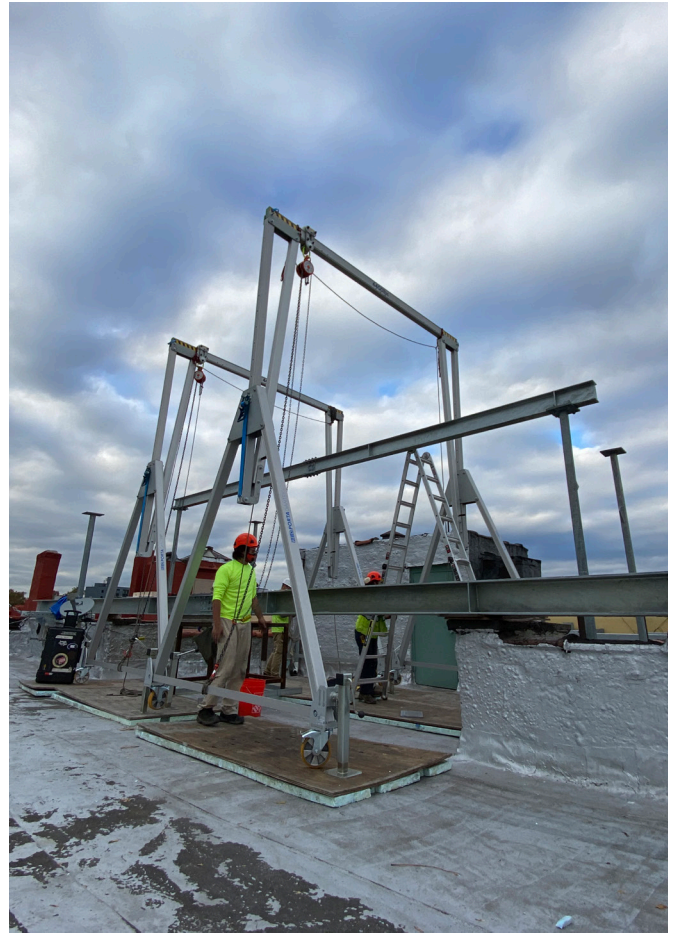
Urban Energy found REID Lifting Inc online and approached them to discuss their options for their lifting challenge. After an initial consultation, the REID team recommended the use of two **PORTAGANTRY TC1** systems with a lifting capacity of 4400lb.

Urban Energy were delighted by the products lightweight and ease of use properties and placed their first order with REID's recommended partner, FAD Equipment Store.

FAD Equipment Store supplied the two 4400lb **PORTAGANTRY** systems with an extra tall A-frame and a 12' 10" beam. At just over 19ft to the lifting eye, it easily accommodated the height required to lift the I-beams.

Crucially, the full system of the **PORTAGANTRY** only weighed 512lb and was quick and easy to assemble with a few people minimizing the load on the roof. The portability of the gantry allowed Urban Energy to transport the system to multiple roofs, ensuring there is no permanent installation costs and provides maximum flexibility.

The chosen gantry cranes were also fitted with wind-up jack



legs to provide an additional height boost of 10" to ensure that it could be adjusted as required for any uneven ground. The gantry also included a gated trolley to attach their chosen lifting device.

The feedback

Following on from their first order, Urban Energy were so pleased with the system that they went on to place an order for a further two gantries, with more set to be purchased in the future.

"We searched high and low for a product that would meet our needs, and after a series of disappointments from other companies we stumbled upon REID and were blown away by not only the capabilities of the Gantry System but by the team at REID that worked hard to make sure our system would be perfect for our application. We're delighted to have found an equipment partner as exceptional as REID Lifting, and look forward to a long relationship with them." - **Urban Energy**



Get in touch to find out how we can help with your lifting and lowering requirements:

➤ [+1 \(888\)-721-6411](tel:+18887216411) ➤ info@reidlifting.com ➤ us.reidlifting.com